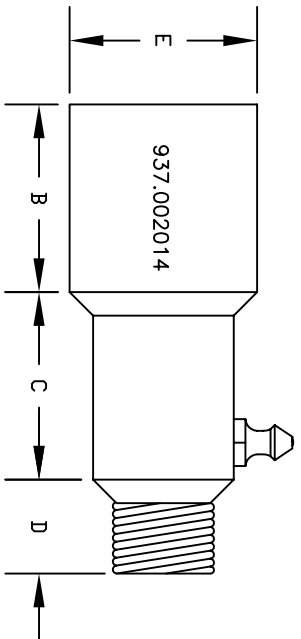
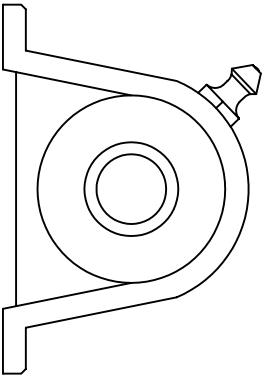


DIMENSION	DESCRIPTION	SIZE
A	TOTAL BODY LENGTH	2.5"
B	.50" CONDUIT THREAD (INSIDE)	1"
C	INSIDE PROBE ADJUSTMENT AREA	1"
D	.125" INSTALLATION THREAD	.50"
E	WIDEST POINT OF BODY	1"



DIMENSION	DESCRIPTION	SIZE
A	TOTAL BODY LENGTH	2.5"
B	.50" CONDUIT THREAD (INSIDE)	1"
C	INSIDE PROBE ADJUSTMENT AREA	1"
D	.25" INSTALLATION THREAD	.50"
E	WIDEST POINT OF BODY	1"

SENSOR HOUSINGS MADE FROM STAINLESS STEEL



STANDARD PILLOW BLOCK

SENSOR FOR STANDARD PILLOW BLOCK:  
 MAXI-TRONIC TEMPERATURE SENSOR .125" GREASE FITTING 937.002018  
 MAXI-TRONIC TEMPERATURE SENSOR .250" GREASE FITTING 937.002014

MAXI-TRONIC, INC. MASON, OHIO		DRAWN BY: JTL	
SCALE: NONE	APPROVED BY:		
DATE:6/29/04			
HOT BEARING INSERT HOUSING STANDARD VERSION			
TEMPERATURE SENSOR	DRAWING NUMBER		
GREASE FITTING HB SERIES	A-94-87-HB1		