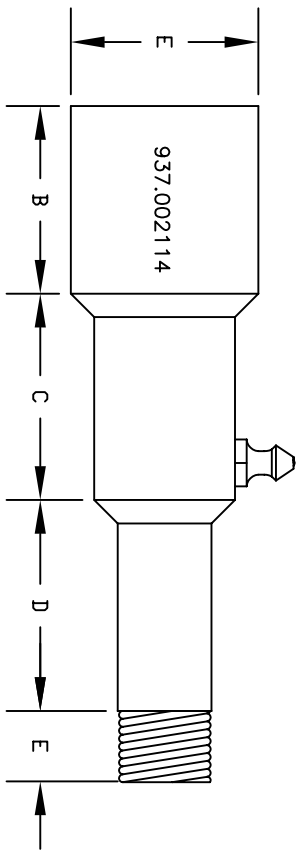


DIMENSION	DESCRIPTION	SIZE
A	TOTAL BODY LENGTH	3.60"
B	.50" CONDUIT THREAD (INSIDE)	1.10"
C	INSIDE PROBE ADJUSTMENT AREA	1.10"
D	SENSOR INSIDE EXTENSION AREA	1.10"
E	.125" INSTALLATION THREAD	.60"
F	WIDEST POINT OF BODY	1"



DIMENSION	DESCRIPTION	SIZE
A	TOTAL BODY LENGTH	3.6"
B	.50" CONDUIT THREAD (INSIDE)	1"
C	SENSOR INSIDE ADJUSTMENT AREA	1.10"
D	SENSOR INSIDE EXTENSION AREA	1.10"
E	.25" INSTALLATION THREAD	.60"
F	WIDEST POINT OF BODY	1"

SENSOR HOUSINGS MADE FROM STAINLESS STEEL

SENSOR FOR DOUBLE INTERLOCK PILLOWBLOCK:
 MAXI-TRONIC TEMPERATURE SENSOR .125" GREASE FITTING 937.0020118
 MAXI-TRONIC TEMPERATURE SENSOR .250" GREASE FITTING 937.0020114

MAXI-TRONIC, INC. MASON, OHIO	
SCALE: NONE	APPROVED BY:
DATE:6/29/04	DRAWN BY: JTL
HOT BEARING INSERT HOUSING EXTENDED VERSION	
TEMPERATURE SENSOR GREASE FITTING HB SERIES	DRAWING NUMBER A-94-87-HB2