

Belt Misalignment Sensors

RB Belt Misalignment Hazard Monitoring

Hazard Monitoring, Anytime, Anywhere.

Maxi-Tronic has the industry leading controls, sensors, service and experience to provide complete hazard monitoring and control systems for your facility.

Maxi-Tronic belt misalignment sensors are ideal for bucket elevators, belt conveyors, rotary drums, food processing and other material handling equipment.

Maxi-Tronic RB Sensors in Action

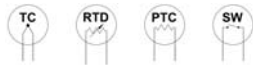
RB Belt Misalignment Sensors are sensitive, reliable and maintenance free.

Configurations available for many applications.

Round sensor has 1/2" NPT conduit fitting and 5' lead.

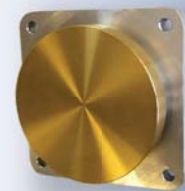
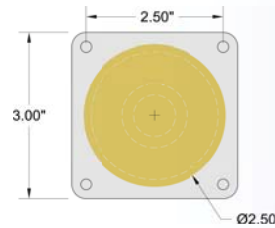
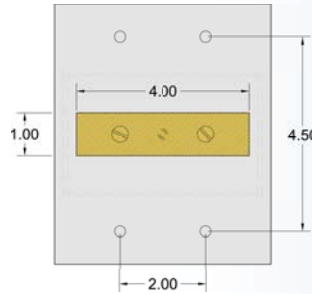
Square sensor has integral junction box and 6" lead.

Sensor Element Types:



Choose from the following industry standard sensor elements to match your controller:

- ◆ **Thermocouple:** Type "T" (Type "J" and others on request). Use thermocouple extension wire (leadwire) when wiring.
- ◆ **RTD:** Platinum PT100 type; 1mA max. Specify 2 or 3 wire.
- ◆ **PTC Thermistor:** 130°F switching temperature, 100Ω @77°F. 10mA@12VDC max. Wire: 500' with 22AWG, 5000' with 16AWG.
- ◆ **Temperature Switch:** Switching temperatures available include: 140°F, 160°F, 170°F with N/O or N/C contacts. Rating: 125VA duty; 15A Inductive; 3FLA-12LRA@120VAC.



Maxi-Tronic Controls for RB Sensors:

- MTDT24:** 24 Thermocouple inputs, digital, 2 alarm relays.
- HB/RB:** 8 or 16 PTC inputs w/status indicators, 1 alarm relay.
- SC4:** 4 PTC Thermistor inputs with a relay output for each.
- Basic4:** 4 Temperature Switch inputs w/relay output for each.

- ◆ Extremely rugged design
- ◆ Fast reacting sensing elements
- ◆ Easy installation and low maintenance

- ◆ UL Listed Class II, Div 2 configurations available
- ◆ No moving parts
- ◆ Available spacers accommodate any casing thickness
- ◆ Integral 1/2" NPT conduit fitting or junction box

MAXI-TRONIC

INCORPORATED

3530 Irwin Simpson Rd - Mason, OH, 45040

513-398-2500

800-659-8250

www.maxitronic.com

info@maxitronic.com